

The only system that reduces populations of Emerald Ash Borer adults during mating season.

FraxiProtec® is an innovative, highly efficient and non-aggressive system that targets EAB adults during mating season with a nearly **100% mortality rate after only seven days** following exposure to FraxiProtec®. FraxiProtec® is tree-friendly and can be used safely when used according to the label directions.

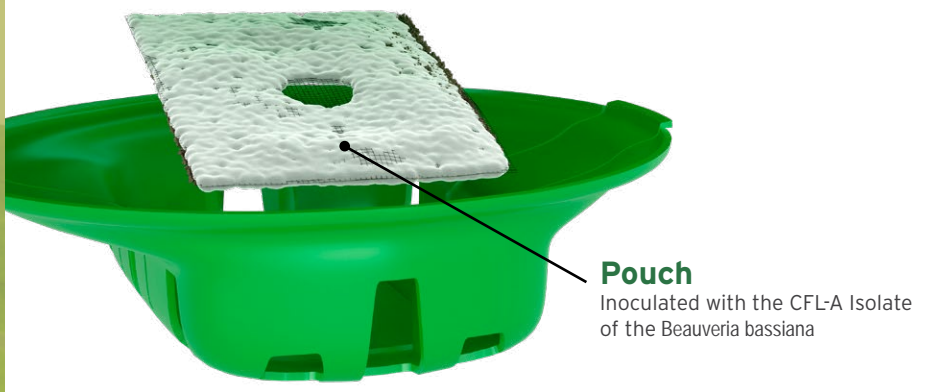
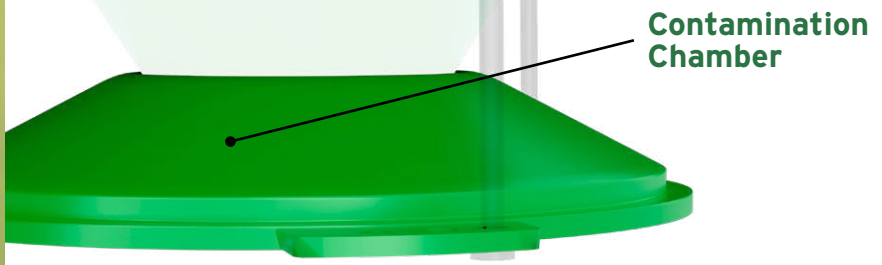
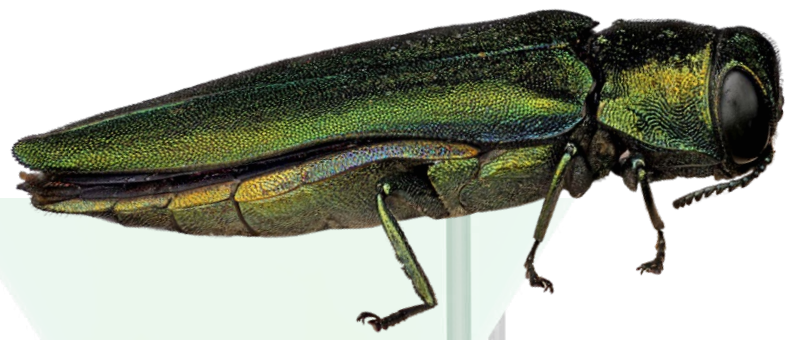


Turning EAB adults into contamination vectors

The system has been **designed as an auto-contamination device**, which includes a Lindgren trap and a contamination chamber containing a pouch coated with a fungus that acts as the active ingredient.

Attracted by the shape and color of the system, EAB adults fall into the funnel cascade and down to the contamination chamber where they come in contact with the fungus inoculated pouch.

Covered with spores, borers escape from the chamber through the system's designed openings and fly off to contaminate other borers during mating season, thus becoming vectors of the fungal disease.



Beauveria bassiana, EAB's foe!

The fungus used in the FraxiProtec® system to contaminate a population of adult Emerald Ash Borers is the CFL-A Isolate of the *Beauveria bassiana*. This lab-proven active ingredient is highly efficient in killing EAB and can be used safely when used according to label directions.

Ideal for individual tree or groups of trees

The system can be deployed to protect individual ash trees or groups of trees. **It can also be used as a preventive measure** in areas showing very low to medium-high EAB populations. It can also be used in combination with other control methods.



Easy targeted installation

Install FraxiProtec® near the sunniest side top of the ash trees, where EAB feed and mate.

One system can **cover a radius range of approximately 25 metres**. FraxiProtec® can be reused over several years. All you have to do is replace the fungus pouch with each new season.

Create a cost-effective network for larger groups of trees

A FraxiProtec® trap network deployed at a rate of an average of **20 units per hectare can contaminate up to 40% of the population**. According to simulations, this level of control over a period of 3 to 4 years would lead to an endemic-level decrease in adult populations. The reduction in egg laying rates allows trees to better withstand and survive attacks from this pest.

